

2

07/16/10 - ADDENDUM NO. 02



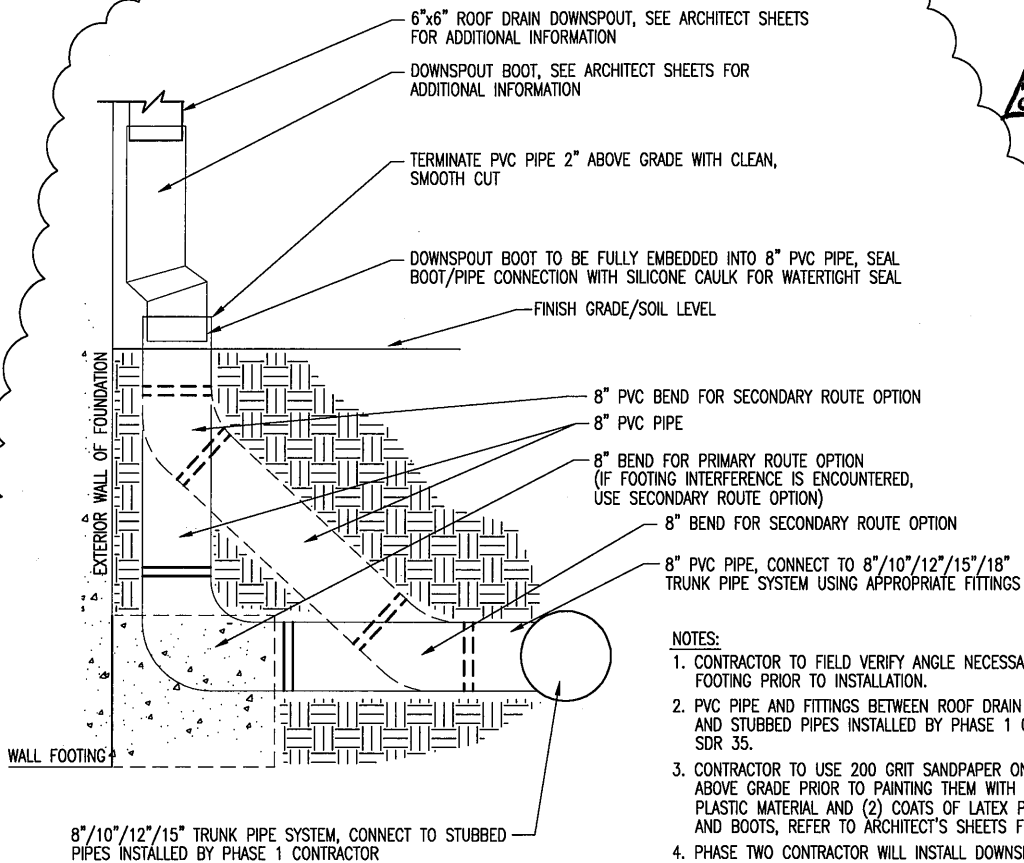
**SOUTHLAND SERVICES, INC.**  
 CONSULTING ENGINEERS  
 645 COLONIAL PARK DRIVE  
 ROSWELL, GEORGIA 30075  
 PHONE: 678-461-0591  
 FAX: 678-461-7719  
 E-MAIL: MLYNCH@southlandservicesinc.com  
 PROJECT NUMBER: 08031.00

NEW HEADQUARTERS FACILITY FOR  
 BLUE RIDGE MOUNTAIN EMC  
 PHASE TWO - BUILDINGS  
 STATE ROUTE 515 & TIMBERLINE DRIVE  
 YOUNG HARRIS, GEORGIA 30582

JULY 16, 2010

PROJ. NO.: 0808

SK-01  
 C-5S



**NOTES:**

1. CONTRACTOR TO FIELD VERIFY ANGLE NECESSARY TO AVOID WALL FOOTING PRIOR TO INSTALLATION.
2. PVC PIPE AND FITTINGS BETWEEN ROOF DRAIN DOWNSPOUT BOOT AND STUBBED PIPES INSTALLED BY PHASE 1 CONTRACTOR TO BE SDR 35.
3. CONTRACTOR TO USE 200 GRIT SANDPAPER ON 8" PVC PIPE EXPOSED ABOVE GRADE PRIOR TO PAINTING THEM WITH (1) COAT OF PRIMER FOR PLASTIC MATERIAL AND (2) COATS OF LATEX PAINT TO MATCH DOWNSPOUTS AND BOOTS, REFER TO ARCHITECT'S SHEETS FOR PAINT COLOR INFORMATION.
4. PHASE TWO CONTRACTOR WILL INSTALL DOWNSPOUT, BOOT, CONNECTION REQUIREMENTS, ROOF DRAIN TRUNK PIPES AND COMPLETE CONNECTION TO STUBBED PIPES INSTALLED BY PHASE 1 CONTRACTOR.

## DOWNSPOUT CONNECTION DETAIL

N.T.S.

07/16/10 - ADDENDUM NO. 02



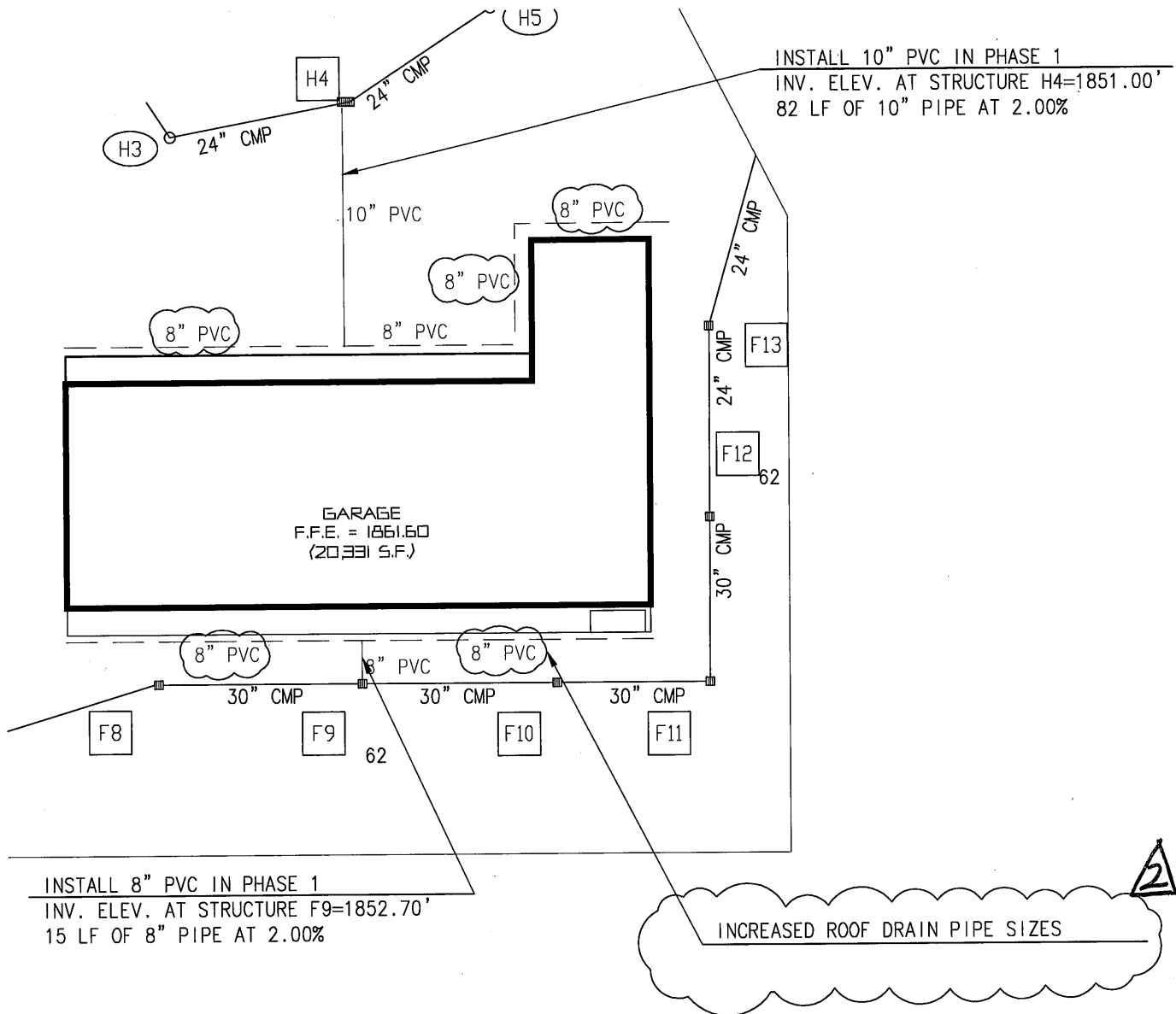
**SOUTHLAND SERVICES, INC.**  
 CONSULTING ENGINEERS  
 545 COLONIAL PARK DRIVE  
 ROSWELL, GEORGIA 30075  
 PHONE: 678-461-0591  
 FAX: 678-461-7719  
 E-MAIL: MLYNCH@southlandservicesinc.com  
 PROJECT NUMBER: 08031.00

NEW HEADQUARTERS FACILITY FOR  
 BLUE RIDGE MOUNTAIN EMC  
 PHASE TWO - BUILDINGS  
 STATE ROUTE 515 & TIMBERLINE DRIVE  
 YOUNG HARRIS, GEORGIA 30582

JULY 16, 2010

PROJ. NO.: 0808

SK-01  
C-17



# ROOF DRAIN PIPING

GRAPHIC SCALE: 1"=60'

07/16/10 - ADDENDUM NO. 02



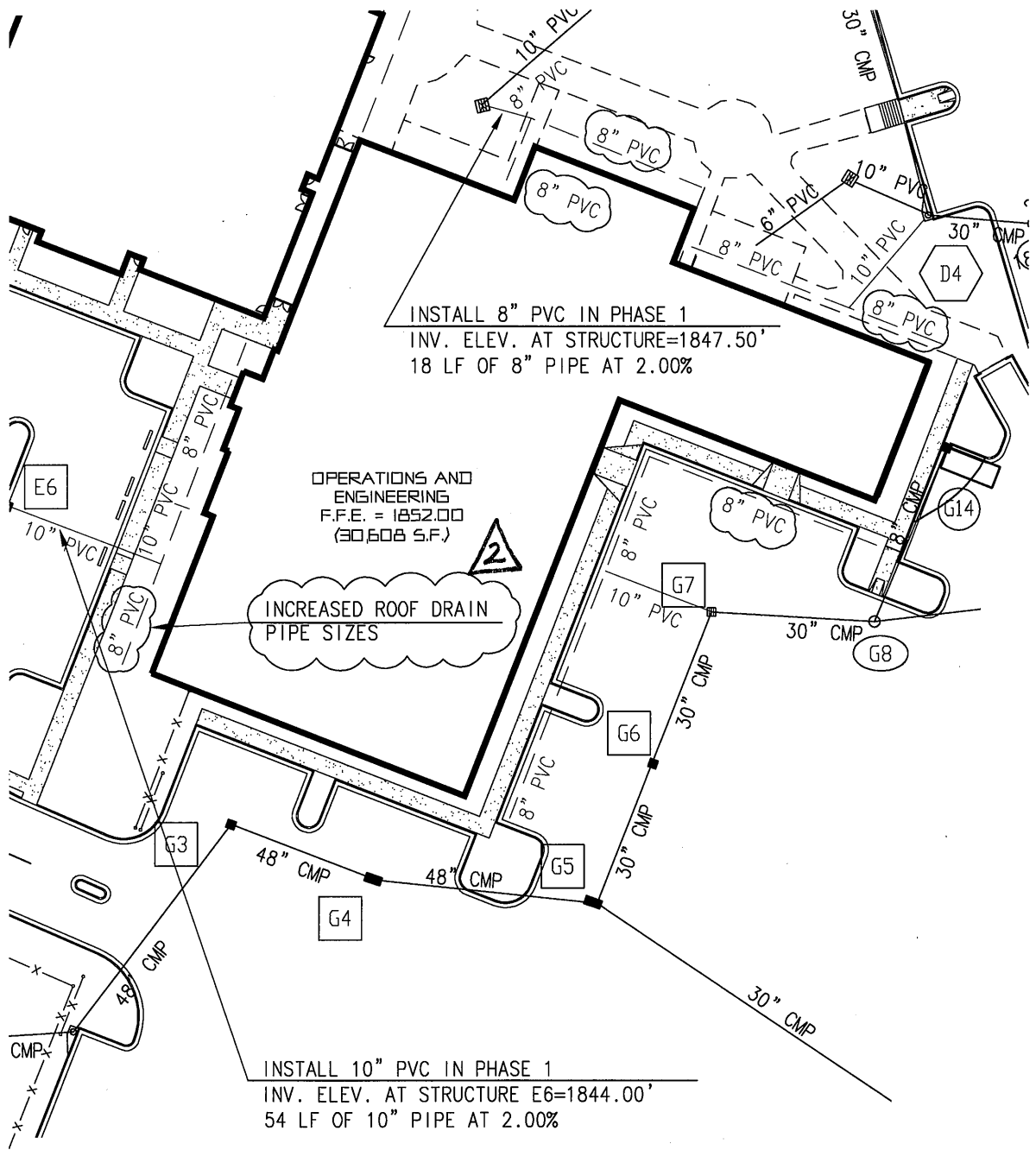
**SOUTHLAND SERVICES, INC.**  
 CONSULTING ENGINEERS  
 645 COLONIAL PARK DRIVE  
 ROSWELL, GEORGIA 30075  
 PHONE: 678-461-0591  
 FAX: 678-461-7719  
 E-MAIL: MLYNCH@southlandservicesinc.com  
 PROJECT NUMBER: 08031.00

NEW HEADQUARTERS FACILITY FOR  
 BLUE RIDGE MOUNTAIN EMC  
 PHASE TWO - BUILDINGS  
 STATE ROUTE 515 & TIMBERLINE DRIVE  
 YOUNG HARRIS, GEORGIA 30582

JULY 16, 2010

PROJ. NO.: 0808

SK-02  
 C-17



INSTALL 8" PVC IN PHASE 1  
 INV. ELEV. AT STRUCTURE=1847.50'  
 18 LF OF 8" PIPE AT 2.00%

OPERATIONS AND  
 ENGINEERING  
 F.F.E. = 1852.00  
 (30,608 S.F.)

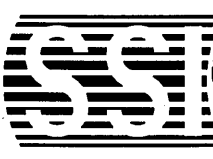
INCREASED ROOF DRAIN  
 PIPE SIZES

INSTALL 10" PVC IN PHASE 1  
 INV. ELEV. AT STRUCTURE E6=1844.00'  
 54 LF OF 10" PIPE AT 2.00%

# ROOF DRAIN PIPING

GRAPHIC SCALE: 1"=60'

07/16/10 - ADDENDUM NO. 02



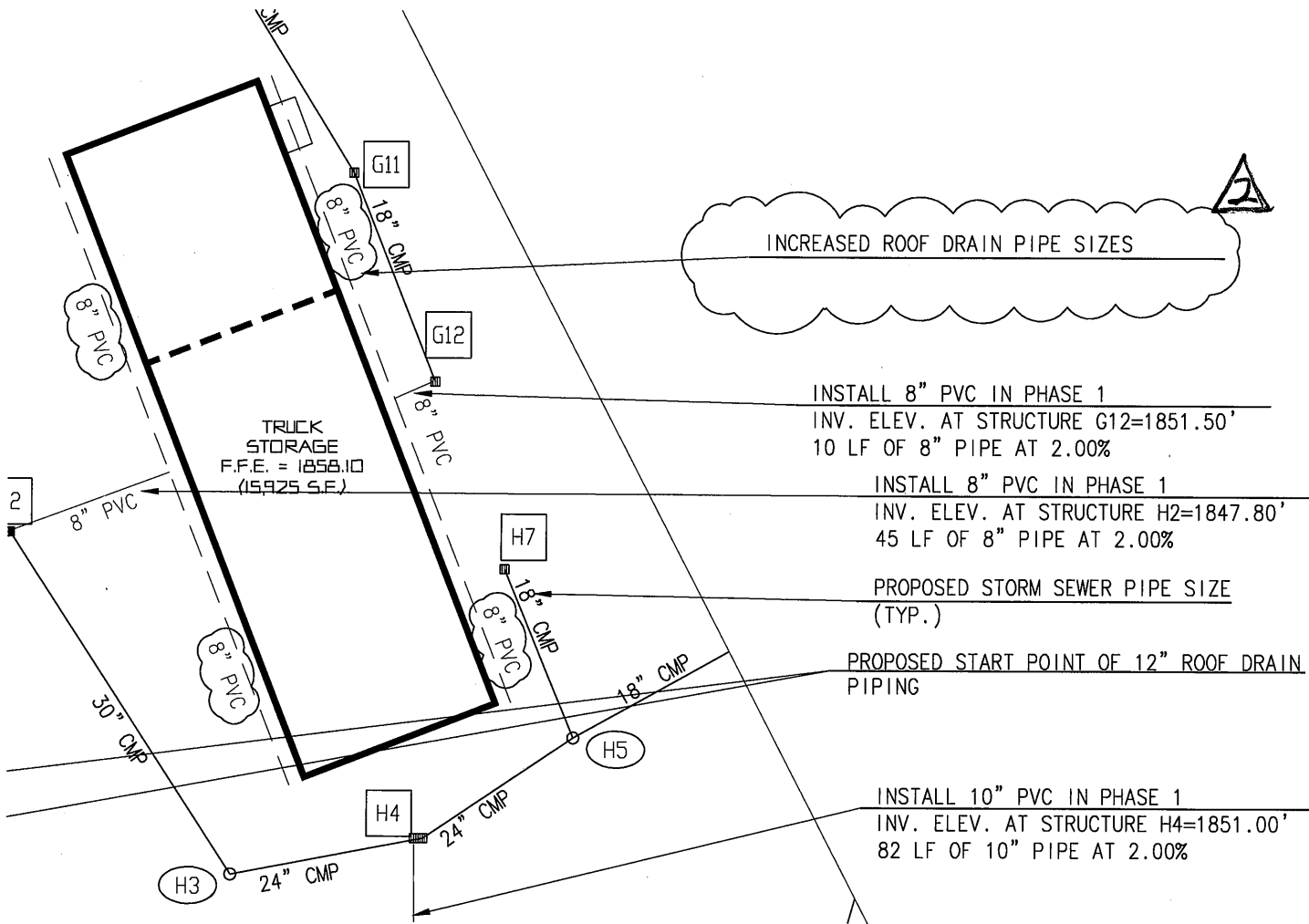
**SOUTHLAND SERVICES, INC.**  
 CONSULTING ENGINEERS  
 645 COLONIAL PARK DRIVE  
 ROSWELL, GEORGIA 30075  
 • PHONE: 678-461-0591 •  
 • FAX: 678-461-7719 •  
 • E-MAIL: MLYNCH@southlandservicesinc.com  
 • PROJECT NUMBER: 08031.00

NEW HEADQUARTERS FACILITY FOR  
 BLUE RIDGE MOUNTAIN EMC  
 PHASE TWO - BUILDINGS  
 STATE ROUTE 515 & TIMBERLINE DRIVE  
 YOUNG HARRIS, GEORGIA 30582

JULY 16, 2010

PROJ. NO.: 0808

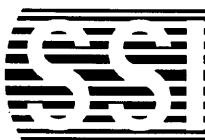
SK-03  
 C-17



# ROOF DRAIN PIPING

GRAPHIC SCALE: 1"=60'

07/16/10 - ADDENDUM NO. 02



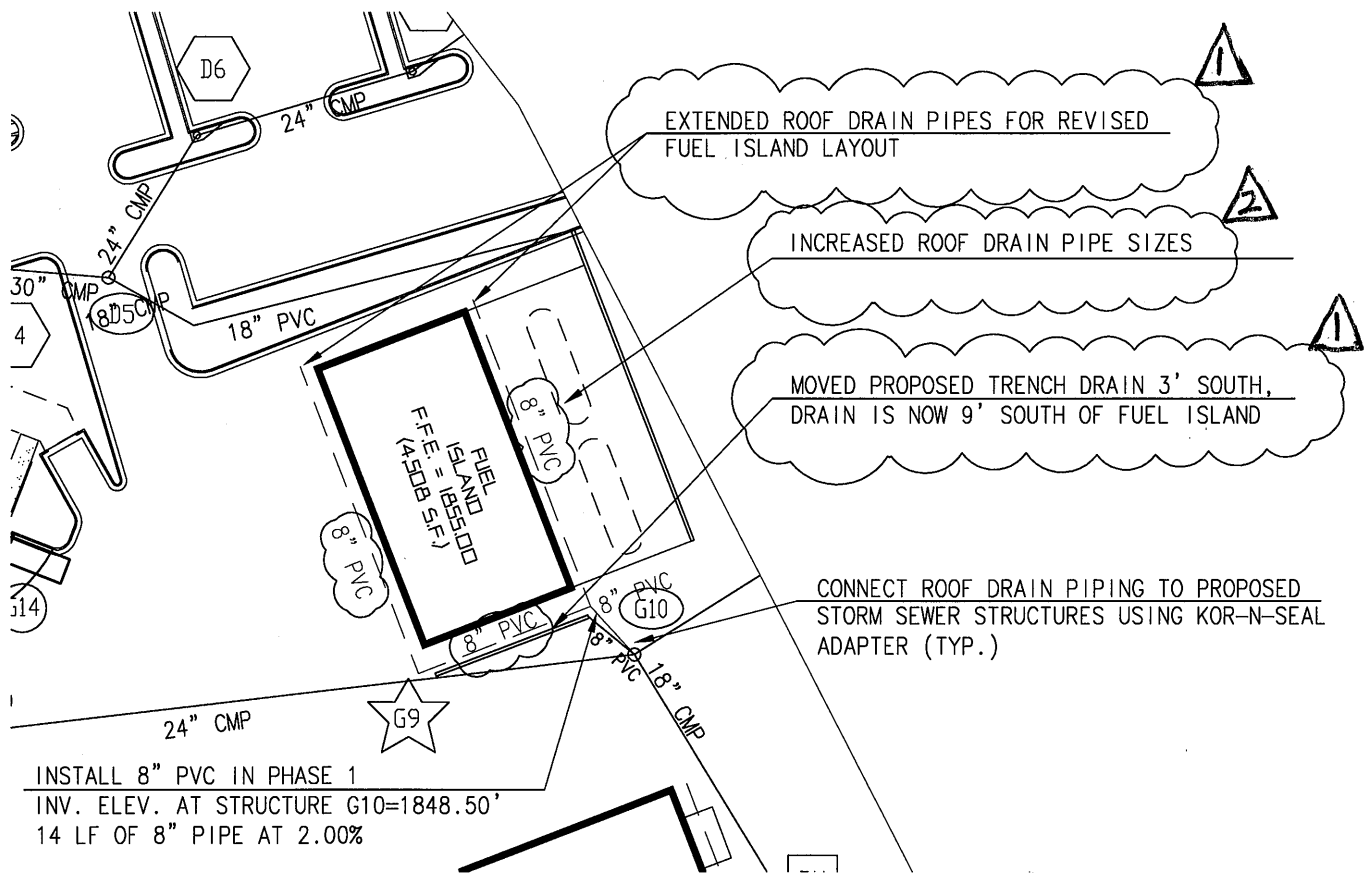
**SOUTHLAND SERVICES, INC.**  
CONSULTING ENGINEERS  
545 COLONIAL PARK DRIVE  
ROSWELL, GEORGIA 30075  
PHONE: 878-461-0591  
FAX: 878-461-7719  
E-MAIL: MLYNCH@southlandservicesinc.com  
PROJECT NUMBER: 08031.00

NEW HEADQUARTERS FACILITY FOR  
BLUE RIDGE MOUNTAIN EMC  
PHASE TWO - BUILDINGS  
STATE ROUTE 515 & TIMBERLINE DRIVE  
YOUNG HARRIS, GEORGIA 30582

JULY 16, 2010

PROJ. NO.: 0808

SK-04  
C-17



INSTALL 8" PVC IN PHASE 1  
 INV. ELEV. AT STRUCTURE G10=1848.50'  
 14 LF OF 8" PIPE AT 2.00%

# ROOF DRAIN PIPING

GRAPHIC SCALE: 1"=60'

▲ 07/16/10 - ADDENDUM NO. 02

▲ 07/08/10 - ADDENDUM NO. 01



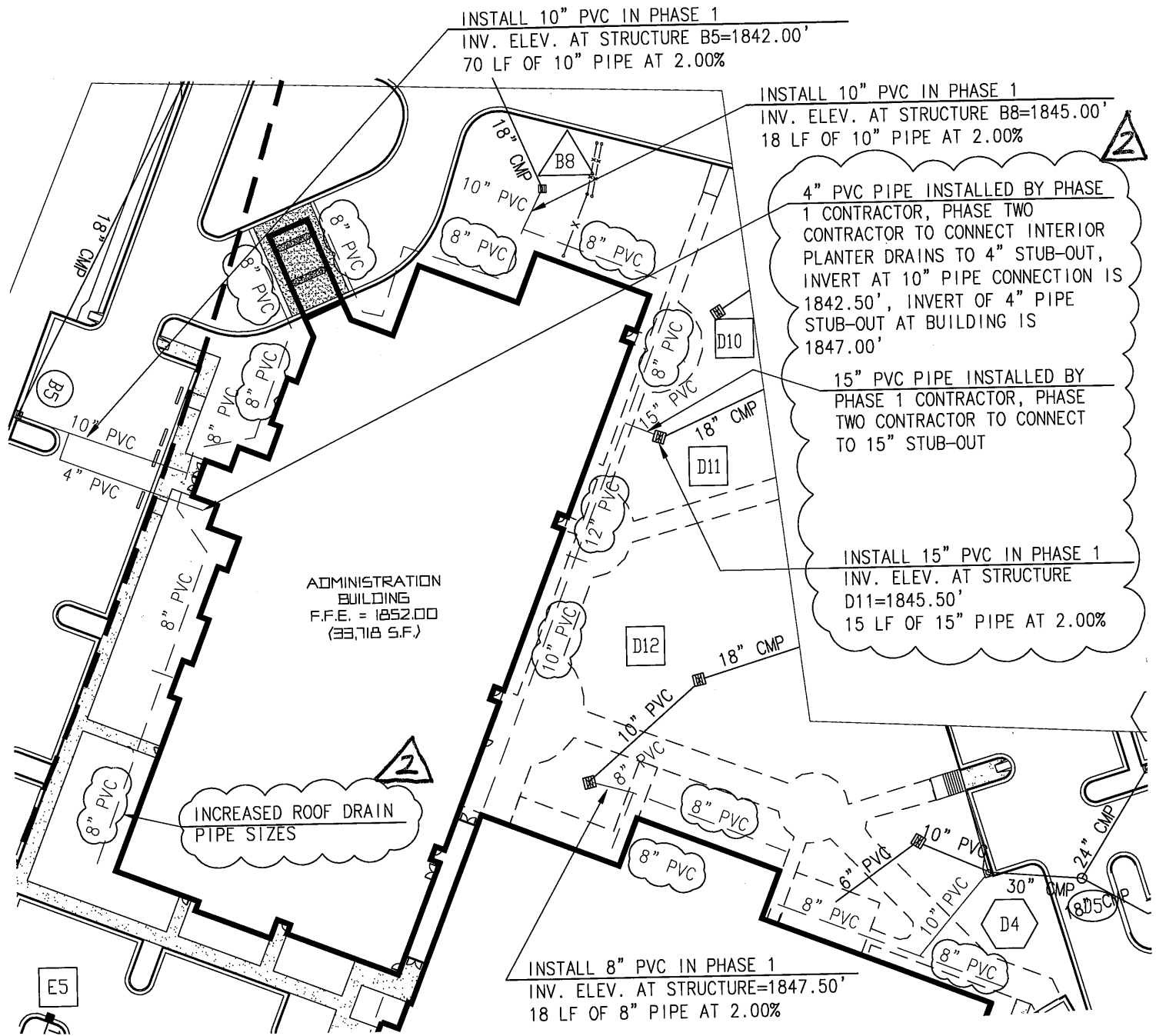
**SOUTHLAND SERVICES, INC.**  
 CONSULTING ENGINEERS  
 545 COLONIAL PARK DRIVE  
 ROSWELL, GEORGIA 30075  
 ○ PHONE: 678-461-0591 ○  
 ○ FAX: 678-461-7719 ○  
 ○ E-MAIL: MLYNCH@southlandservicesinc.com  
 ○ PROJECT NUMBER: 08031.00

NEW HEADQUARTERS FACILITY FOR  
 BLUE RIDGE MOUNTAIN EMC  
 PHASE TWO - BUILDINGS  
 STATE ROUTE 515 & TIMBERLINE DRIVE  
 YOUNG HARRIS, GEORGIA 30582

JULY 16, 2010

PROJ. NO.: 0808

SK-05  
 C-17



# ROOF DRAIN PIPING

GRAPHIC SCALE: 1"=60'

07/16/10 - ADDENDUM NO. 02



**SOUTHLAND SERVICES, INC.**  
CONSULTING ENGINEERS  
545 COLONIAL PARK DRIVE  
ROSWELL, GEORGIA 30075  
PHONE: 678-461-0591  
FAX: 878-461-7719  
E-MAIL: MLYNCH@southlandservicesinc.com  
PROJECT NUMBER: 08031.00

NEW HEADQUARTERS FACILITY FOR  
BLUE RIDGE MOUNTAIN EMC  
PHASE TWO - BUILDINGS  
STATE ROUTE 515 & TIMBERLINE DRIVE  
YOUNG HARRIS, GEORGIA 30582

JULY 16, 2010

PROJ. NO.: 0808

SK-06  
C-17